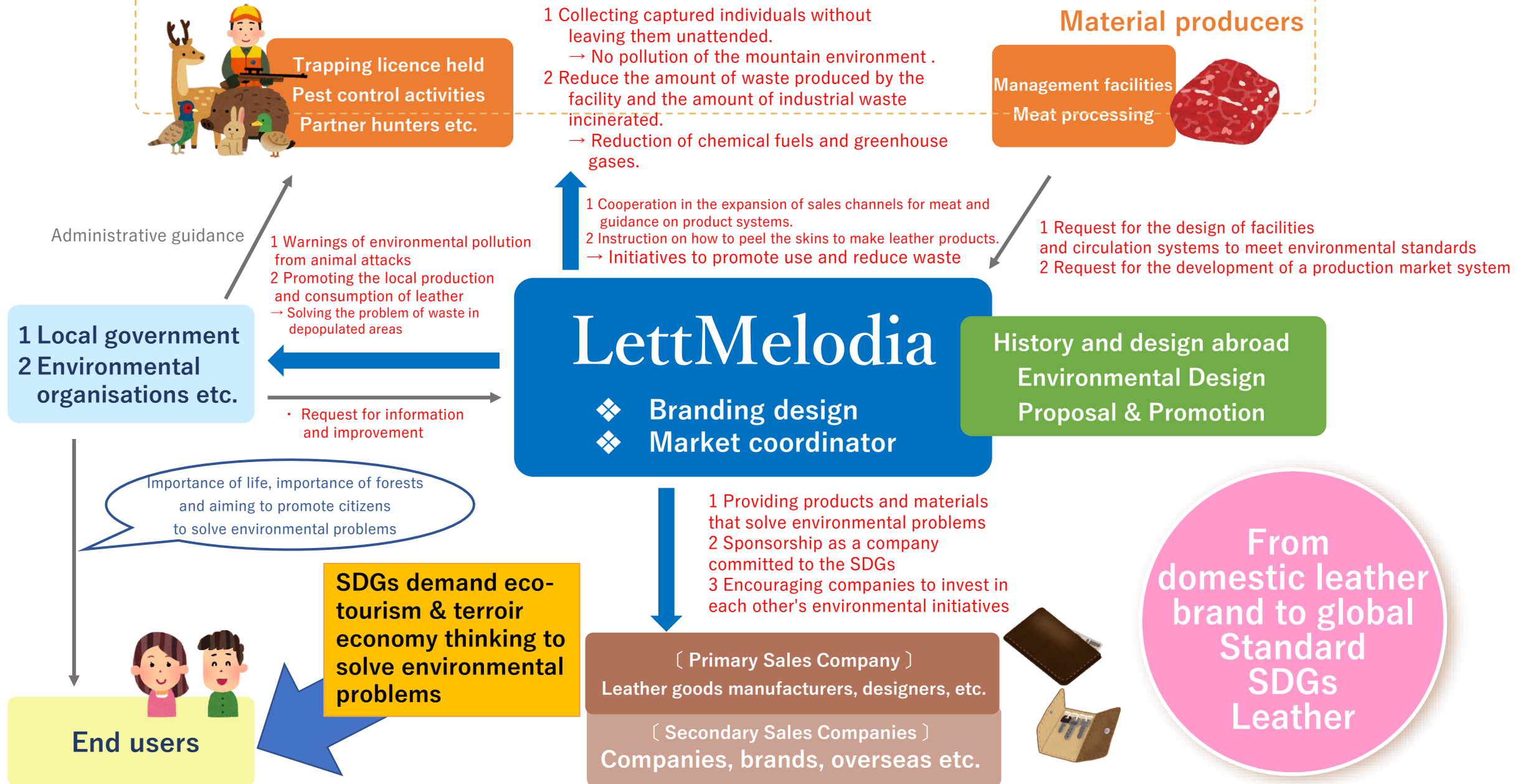


# <<< Scheme of Japan's Natural Leather Industrialization Project (R1.6.1 Ver1.2) >>>



# <<< SDGs and environmental schemes we are involved in (R3.1.1 Ver1.4) >>>



# Initiatives for Our SDGs Concept



Protecting the mountain environment means delivering safe water downstream, providing a secure and safe supply of water, delivering nutrients from the mountains to the sea, retaining and storing water, protecting the environment for all terrestrial and aquatic life, absorbing carbon dioxide, and continuing to provide the essential elements and cyclical cycles needed to maintain our living environment.

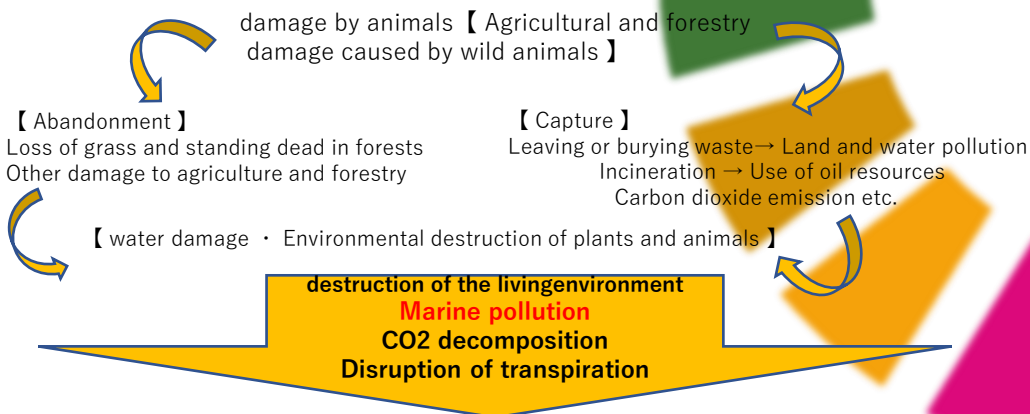


Preserving water source forests and the forest environment helps to protect and conserve the mountain environment from flood and earthquake disasters.



We use materials of natural origin in all our production. All of our products are made by hand in Japan, and we use materials that will return to the earth as much as possible when they are disposed of. We are also constantly communicating the message of the natural environment to our customers.

## Relationship between the vicious cycle of environmental destruction and the water cycle



## The water cycle we create

- < 3 initiatives to reduce waste >
- 1 Life in the mountains  
= Holding on to life
  - 2 Recovery of all 1 individual  
→ No burial disposal
  - 3 No waste from the meat processing plant  
→ Use up all the meat, pet food and compost, even the skins.  
= No more incineration.

< Vermin population control >  
→ Protecting the environment by preserving mountain plants and trees.

In addition to the protection of the living environment downstream, it also protects the water source forests that support the water and helps to create an environment in the mountains that retains water without polluting the sea. In other words, it is a "cycle".

< Clean water and air >  
→ This process allows good water to flow through the river to the sea.

< Giving back >  
→ It becomes a cloud, and the cloud which hits the mountain becomes rain and pours down on the mountain.

To make SDGs and Terroirs

The Answer

To create an environment in which we can live in the cycle  
of nature and integrate into the community.



The skins were disposed of as waste in  
the mountains or incinerated.  
= Use as a material.

Leather, a local industry × Historical  
Self-processing leather.  
Clothed in Japanese history.

**Going global as a terroir**  
Purely domestic production  
Domestic and environmental concept  
Coordinated design

Local businesses × Materials  
Hometown and school use to promote local  
production for local consumption.  
Collaboration with other local industries.

Concept × Design

A product crossed with design  
Bringing all concepts to life in our work

Concept × Overseas

Historical transmission, combined with  
Kumano Kodo

To design shows in Paris and Hong Kong

The Base of Origin = Origin Leather Japan's work is about making life live, not dying it.